

www.nevers-tourisme.com

Nevers Tourism Office

Palais Ducal - 4 Rue Schœffer - BP 818 - 58008 NEVERS cedex

Tel : +33 (0)3 86 59 86 00 • contact@nevers-tourisme.com

Pougues-Les-Eaux Tourism Office

44 Avenue de Paris - 58320 POUQUES-LES-EAUX

Tel : +33 (0)3 86 59 86 00 • contact@nevers-tourisme.com

Office de Tourisme de Nevers et sa Région

My trip to Nevers

We expand our horizons

NEVERS, passionately

Les disettes de bonne(s) aventure(s)

Nelly

Magali

Magalie

Virginie

Sophie

Charlotte

Alexandra

Anne-Marie

Opening Hours

Nevers Tourism Office

LOW SEASON : OCTOBER 01 TO APRIL 30

- Mondays, Sundays and public holidays : closed
- Tuesday to Saturday : 10 am - 12:30 pm / 2 pm to 5:30 pm

HIGH SEASON : MAY 02 TO SEPTEMBER 30

- From Monday to Saturday : 9:30 am - 6:30 pm
- Sundays and public holidays : 10 am - 1 pm / 2 pm - 6 pm
- Closed on May 1<sup>st</sup>

Pougues-Les-Eaux Tourism Office

LOW SEASON : DEC 01 - FEB 28

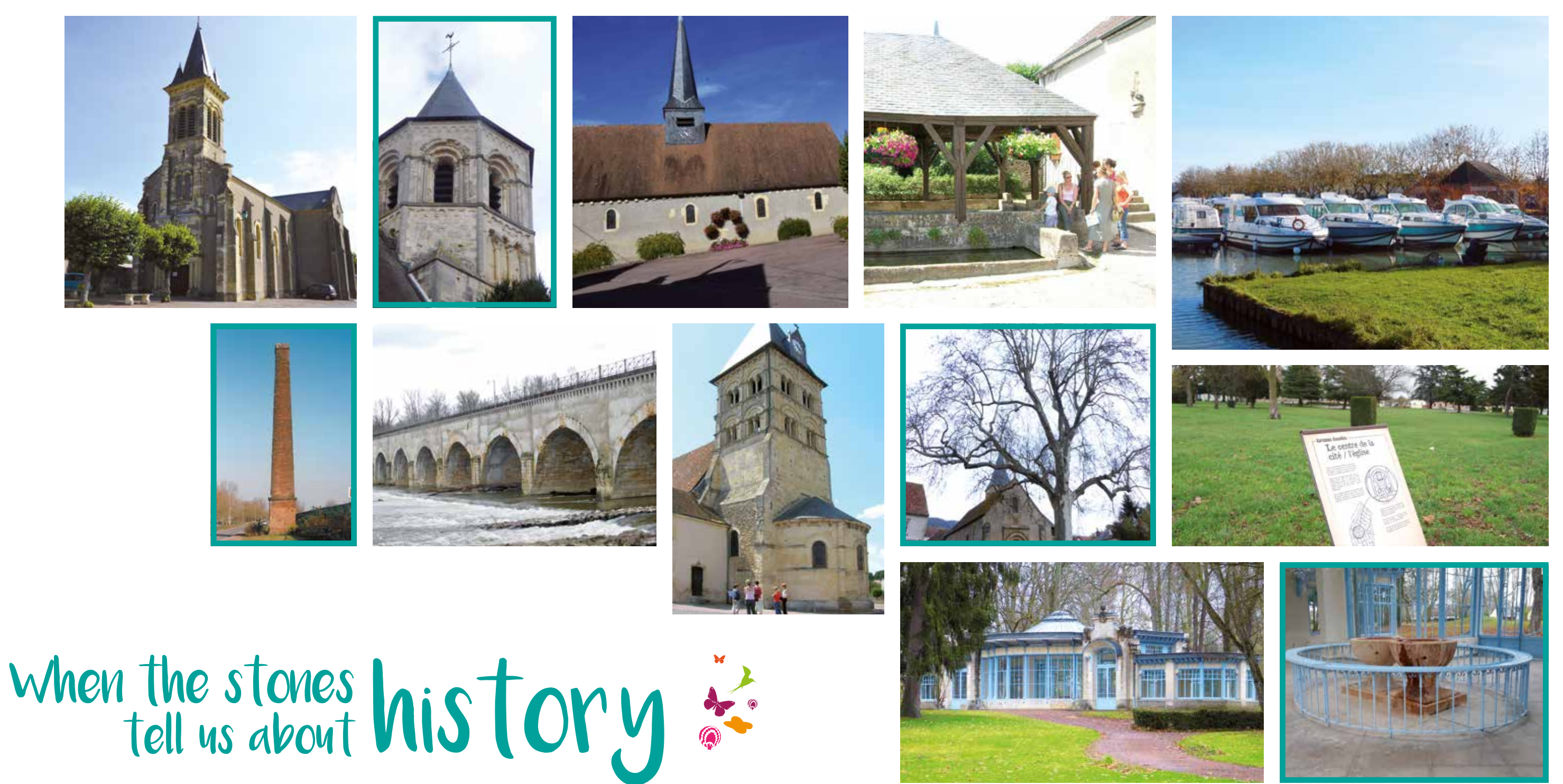
- Closed

MIDDLE SEASON : MARCH, OCTOBER, NOVEMBER

- Tuesday to Saturday : 2 pm to 5:30 pm
- Mondays, Sundays and public holidays : closed

HIGH SEASON : MAY 01 TO SEPTEMBER 30

- Tuesday to Saturday : 3 pm to 6:30 pm
- Mondays, Sundays and public holidays : closed



# When the stones tell us about history

## CHALLUY

**Saint-Vincent church**  
XIX<sup>th</sup> century

Bought back by the municipality in 1843, major maintenance work has to be done but unfortunately it was not enough. Building reconstruction started in 1866 and will last 22 years.

## COULANGES-LES-NEVERES

**Forge**  
XVII - XIX - XX<sup>th</sup> centuries

It was established in the XVII<sup>th</sup> century. In the XVIII<sup>th</sup> century, it became a satellite of Guéigny, specialising in rolling steel. It was one of the last in France to operate with wood charcoal. Its activities ceased in 1878. List as a Historical Monument in 1990 and 2008.

## FOURCHAMBAULT

**Chimney • XIX<sup>th</sup> century**

This chimney is evidence of the industrial activity of Fourchambault (metallurgy). Until the beginning of the XX<sup>th</sup> century, there were still dozens of chimneys present.

## GARCHIZY

**Church of Saint-Martin**  
XVII<sup>th</sup> century

It has a single nave and a square choir. You can see the octagonal bell tower that rises above the dome as well as the rooster that has surmounted the spire for 250 years.

## GERMIGNY-SUR-LOIRE

**Church of Saint-Germain • 1540**

The Church has a single nave without a transept. The roof of the nave, covered in small tiles, contrasts with that of the arrow of the steeple, covered in slate.

## GIMOUILLE

**The canal bridge • 1837**

The construction of the Gimouille-Le Guétin canal bridge was part of the Loire Lateral Canal project which aimed to create a navigable waterway from Decize to Briare.

## MARZY

**Wash-house • 1847**

Restored in the second half of the XX<sup>th</sup> century. A *Pieta* (XV<sup>th</sup> century) embedded in the wall of a nearby house seems to watch over it.

## Church of Saint-André

XII - XVII<sup>th</sup> century

The statue of St. Andrew (*patron saint of Burgundians*) is the only ornament of the tympanum of the Church of Saint André (XII<sup>th</sup> - XVII<sup>th</sup> century).

## PARIGNY-LES-VAUX

**The tree of liberty • 1889**

The town planted this plane tree on the occasion of the centenary of the Revolution.

## POUGUES-LES-EAUX

**Saint-Léon and Saint-Léger  
Hot Springs Pavilion • 1907**

The pavilion was used by spa guests to consume the water served to them but also to enjoy the reading room. Today, it hosts temporary exhibitions all year round.

## SAINCAIZE-MEAUCE

**Château de Meauce**  
from 1360 to the XVI<sup>th</sup> century

The Château is of medieval origin and located on the banks of the River Allier. Built on the site of an old feudal mound, it is one of the oldest in Nivernais. Today, it is under renovation.

## SERMOISE-SUR-LOIRE

**The port de Plagny • XIX<sup>th</sup> century**

The construction of the Loire Lateral Canal, which took 16 years, was at the origin of the development of Plagny which, from less than 50 inhabitants at the beginning of the XIX<sup>th</sup> century, rose to over 200 at the end of the same century.

## VARENNES-VAUZELLES

**The Garden City  
of "La Bonne Dame de l'Orme"**

The beginnings of the construction project for a workers' city go back to 1919 under the impetus of Colonel Rimailho (*one of the leaders of the CGEM*), to whom had been entrusted the operation of the repair shops for the locomotives of Paris established in Vauzelles since 1911.



# The museums



## MARZY

**Gautron du Coudray Museum**

The objects and works exhibited at the museum were found in the Municipality or donated by generous donors, and illustrate in particular the life of yesteryear in Marzy.

Victor Gautron du Coudray, a local scholar, collector and regionalist writer, set up this first "Nivernais Village Museum". The contents of the museum, which was initially devoted to natural history, minerals, fossils and bird specimens, gradually underwent substantial changes.

Visiting the museum provides the opportunity to discover the history and culture of the town of Marzy, through items of local, rural life.

- Group tours by appointment.
- Free admission.



**Musée Gautron du Coudray**  
• 22 Place de l'église 58180 Marzy  
• Tel : +33 (0)3 86 59 28 47  
• Mail : amis-du-musee-marzy@wanadoo.fr  
• Facebook

**Opening days and hours :**  
• Open from April to November daily except on Tuesdays from 2:30 pm to 5:30 pm,  
• Closed annually from December to March.



## POUGUES-LES-EAUX

**The Contemporary Art Centre  
Saint-Léger Park**

Located in the Saint-Léger Park, the main site of the former spa town of Pougues-les-Eaux, the Contemporary Art Centre has a real exhibition and workshop area for artists.

The Contemporary Art Centre organises monographic and collective exhibitions, combined with meetings and events, which enable the public to access national and international artistic news.

The Saint-Léger Park Visitor Services provides support to all the exhibitions by designing events and mediation tools adapted to each audience. With a programme of varied activities (*visits, meetings, conferences, workshops ...*), Visitor Services assists the public in a sensitive approach to the works of art and promotes the understanding of the challenges and problems of contemporary creative work.

- Free entrance.



**Parc Saint-Léger**  
• 23 Avenue Conti  
58320 Pougues-Les-Eaux  
• Tel : +33 (0)3 86 90 98 80  
• Website : www.parcsaintleger.fr  
• Facebook

**Horaires d'ouverture :**  
• Open from Wednesday to Sunday, 2 pm to 6 pm. During the summer, from Tuesday to Sunday, 2 pm to 7 pm.  
You may also visit by special appointment.



## VARENNES-VAUZELLES

**Resistance national  
Museum**

This museum traces the Resistance among railway workers and the memory of the victims during the 2<sup>nd</sup> World War from 1939 to 1945.

The museum, opened in 1988, exhibits documents and objects that are evidence of the action of the Resistance in the region. It is devoted to the Resistance of the railway workers of the Municipality. In this place full of objects that belonged to members of the Resistance, we also find many visual aids illustrating the difficulties of life during the occupation, the yellow star worn by the Jews or the holding of a deportee and many historic objects... The most accurate sources are : "Martyrologie de la Déportation et l'Internement Nivernais" by André Piaut, and "Histoire de la Résistance et de la Déportation dans la Nièvre" by Jean-Claude Martinet. A workshop enables schoolchildren and researchers to find information.

- Free admission.

**Musée de la résistance nationale**  
• 4 bis Rue André Malraux  
58640 Varennes-Vauzelles  
• Tel : +33 (0)3 86 38 21 76  
• Mail : musee.resistance.vauzelles@orange.fr

**Opening days and hours :**  
• Open Tuesdays and Fridays,  
3 pm to 5:30 pm.

## GUERIGNY

**The Forges and Navy Museum**

Formerly the flagship of the naval industry, the site of Vieux Guéigny has become a place of memory where you can stroll around. So, listen to its story, hidden behind a surprising sea anchor, over 500 km from the coast.

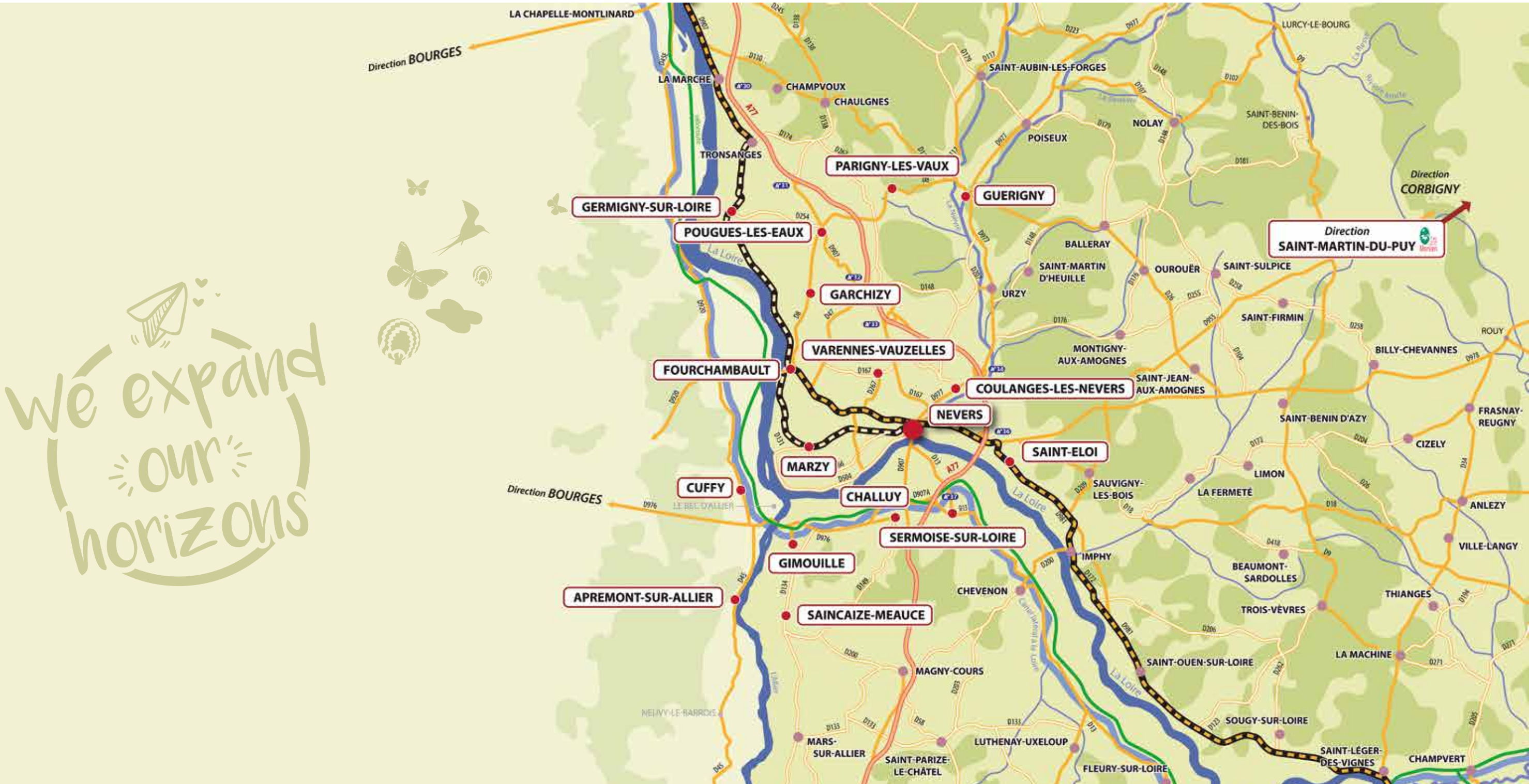
The Forges and Navy Museum traces the history of the Royal Forges of Guéigny, which for centuries provided the Royal Navy with metal safety pieces (*anchors and chains*). A new thematic exhibition is presented every summer. The site itself, its hydraulic installations and its buildings from the 18<sup>th</sup> and 19<sup>th</sup> centuries provide a pleasant place for walks and the centre for excursions to secondary sites throughout the area of the community of municipalities. A major French manufacturing site representing the cultural legacy and the memory of an industrial past, the Forges served the Navy for many years. The museum, which is located in Guéigny and is managed by the Association of the Friends of Old Guéigny ("Amis du Vieux Guéigny"), immerses you in the world of iron and fire experienced by a great number of workers.

- Entrance fee



**Musée Forges et Marines**  
• Avenue Arnault de Lange  
58130 Guéigny  
• Tel : +33 (0)3 86 37 01 08  
• Mail : avg@museeforgesetmarines.fr  
• Website : www.museeforgesetmarines.fr  
• Facebook

**Opening days and hours :**  
• Themed exhibitions and Museum from July 1 to September 16  
• Open : daily except on Tuesdays from 2:30 pm to 6:30 pm.  
• Museum : open all year for groups, by appointment.





# Let's go for a walk



## GINOUILLE

### Bec d'Allier Trail

The Boatman's Trail": 4 km, 2 hrs round trip. This trail first accompanies you along the canal and then on the banks of the Allier.



## MARZY

### Panoramic view of the Bec d'Allier

Located near Nevers, take the family to discover the Bec d'Allier, the confluence of the River Allier and the River Loire. This site, classified as Natura 2000 and the 1<sup>st</sup> WWF Panda site in France, is also an ornithological reserve : onsite, over 200 species have been observed there.



## PARIGNY-LES-VAUX

### Coteau du Chaumois

The Little Cicada Trail" 1.2 km, 1 hr there and back. To discover: the mountain cicada and the wealth of the well-preserved limestone environment.

## POUGUES-LES-EAUX

### To discover Pougues-les-Eaux in an entertaining way, here are 3 ideas

**The Drop of Water Trail :**  
Follow the arrows on the ground, a hiking trail of 2.5 km with explanatory panels that operate with the flash code.

**Geocaching :**  
Modern treasure hunt working with a smartphone. The goal is to find the 25 caches with the GPS coordinates.

**Ze visit :**  
7 places are described to you through anecdotes, music and interviews.

### Hiking trails

These 3 hikes of 8 km will enable you to discover the Thermal Park, the wash-houses and the National 7 Motorway, as well as the Districts of Maupertuis and Riots, the Hamlet of Priez, Bellevue and the Roman Bridge.

### The Thermal Park

Stroll along the park's pleasant paths, and discover the pond, the promenade, the "Path of Sighs" and the Hot Springs Pavillon. Listed as a Historical Monument in 2014.

## VARENNES-VAUZELLES

### La Beue Estate

The "Lépidio Trail" and the "Robin Trail": 800 m long and 30 min there and back for each trail. To discover : alder and reed beds as well as sheaths covered with broom (*forest-type plants*).



### Niffond Lake

Lake that will delight young and old ! Relaxation guaranteed around this lake where swans, ducks and fish mingle - ideal for fishing parties and a walk in the forest. Children will appreciate to play in the labyrinth.

## APREMONT-SUR-ALLIER

### Floral Park

In this enchanting garden, you will be charmed by this park as you discover a waterfall, flower beds with vibrant colours, little houses, trees and rare plants as well as a stable and the château.

**Parc Floral et Musée d'Apremont**  
• 18150 Apremont-sur-Allier  
• **Tel :** +33 (0)2 48 77 55 00  
• **Mail :** info@apremont-sur-allier.com  
• **Website :** www.apremont-sur-allier.com  
• **Facebook**

**Prices :**  
• **Adult :** 10 €  
• **Children (7 to 12 y.o) :** 6 €  
• **Less than 7 y.o :** Gratuit  
• **People with disability :** 5 €  
• **Group (20 people and more) :** Adult : 9 € / children (7 to 12 y.o) : 5 €. Free for the tour leader and driver. Individual seasonal subscription : 30 €  
**Price inclusion :** Parc visit, carriage museum and exhibition, walk on castle bulwark.



## SAINT-ELOI

### Arboretum des feuilles fleuries

It brings together multiple varieties of trees. It is beautiful in the spring when the azaleas, rhododendrons and roses are in bloom.

**Arboretum des feuilles fleuries**  
• Rue de Remeron 58000 Saint-Eloi  
• **Tel :** +33 (0)6 07 17 80 93  
• **Mail :** eric.bariller@sfr.fr  
• **Website :** www.lesfeuillesfleuries.fr

### 2018 dates of opening :

• April 28 and 29  
• May 1, 5, 6, 8 and 10  
• June 2, 3, 9 and 10  
• September 15 and 16 (*heritage days*)

### Price :

• **Entrance :** 3 € (*animals not allowed*)

# Arts and crafts

## Bijoux De Saisons

To have nature for a workshop", is to be able to watch a flower bloom and a leaf unfold. Then scribble on a notebook to create a leaf ladle, a flower cup, plates and jewellery all in lightness. This is working in faience, combining the technique of the plant footprint with other research so that the plant can provide a delicate relief to my creations. Finally, fire beautifies the combination. The colour reveals the subtle transition of the seasons when nature falls asleep and the golden colours of autumn take the place of the vanishing chlorophyll.

**Bijoux de Saisons - Marie-Christine VALLET**  
• **Tel :** +33 (0)6 86 51 72 03  
• **Mail :** bijouxdesaisons@orange.fr  
• **Website :** www.bijouxdesaisons.com  
• **Facebook**

# heritage of tastes

We are in the heart of a region that values authenticity and where you can find small-scale local producers who are proud of their work and their region. They perpetuate tradition in the rules of the art and participate in their own way in maintaining our heritage of tastes.



## Val-de-Loire biscuits

The handmade production of biscuits is located in the heart of the Pouilly sur Loire vineyard. Over the years, various specialties have received awards, such as "Les Craquants", which were awarded the title of best biscuits in France, and the "Craquettes à la crème de cassis", which were awarded a blue ribbon. The Paving Stones of the Blue Road : Created in tribute to the National 7 Motorway, this little praline made of hazelnuts, milk chocolate and nougatine will surely make you melt !

**Les craquants du Val-de-Loire**  
• Route de Châteauneuf 58150 Pouilly-sur-Loire  
• **Tel :** +33 (0)3 86 39 09 67  
• **Mail :** craquants@sfr.fr  
• **Website :** www.craquants.com  
• **Facebook**



## Michel Langlois Estate

The vineyard of Catherine and Michel Langlois is located in Pouigny between Sancerre and Pouilly-sur-Loire in the Department of Nièvre. Very closely linked to this land and the values attached to it, Catherine and Michel took over the estate in 1996 and worked to diversify the vineyard and acquire new vineyards in the area of Pouilly-Fumé area, the Coteaux du Giennois and Vins de Pays. Passionate and energetic, Catherine and Michel have made it a point of honour to promote the recognition of this new vineyard, which is the Coteaux du Giennois, AOC since 1998. A neighbour of the famous Sancerrois vineyard, the Coteaux du Giennois deserves its reputation for excellence.

**Domaine Michel Langlois**  
• Le Bourg 58200 Pouigny  
• **Tel :** +33 (0)3 86 28 06 52  
• **Mail :** catmi-langlois@orange.fr  
• **Website :** www.domaine-langlois.fr

## Duc'ale Beer

It is also called "Nevers Beer", blonde, slightly golden, graded 7% vol. There are 8 other beers to discover at the Rur'ale !

**Brasserie la Rur'ale • M. Robiche**  
• Route des champs de pierre Pinay 58320 Parigny-Les-Vaux  
• **Tel :** +33 (0)6 50 66 70 01  
• **Mail :** vincent.robiche@laposte.net  
• **Website :** www.biere-larurale.fr  
• **Facebook**



## GINOUILLE

### Boat trip on the Lateral Canal

Admire and enjoy ! This boat trip will enable you to discover the Guétin Canal Bridge through its stairway of locks.

**Bateau promenade Le Latéral**  
• 58470 Gimouille  
• **Tel :** +33 (0)6 65 96 28 25  
• **Mail :** lateral@evezard.fr  
• **Website :** www.lelatéral.fr  
• **Facebook**



## A Great Adventure in the Woods

An adventure trail in the forest offers supervised outdoor activities, providing both recreation and sports, which consist of climbing and moving through the trees.

**Le Domaine du Grand Bois**  
• Route de Parfot 58470 Gimouille  
• **Tel :** +33 (0)3 86 21 09 21  
• **Mail :** reception@grand-bois.com  
• **Website :** www.grand-bois-aventure.com  
• **Facebook**



## POUGUES-LES-EAUX

### Municipal Pool

Open from July 1<sup>st</sup> to August 31, 11 am to 7 pm non-stop. Discovery pool, area for picnics and relaxing.

**Piscine municipale**  
• Les Chanternes Avenue de Paris 58320 Pougues-les-Eaux  
• **Tel :** +33 (0)3 86 90 98 00  
• **Mail :** mairie@ville-pouguesleseaux.fr  
• **Website :** www.ville-pouguesleseaux.fr  
• **Facebook**



## Casino

Located just 2 hours South of Paris, open every day. In a green and quiet setting, in a park full of trees with a pond, it invites you to discover its activities and have fun : slot machines, roulette, poker... with the Ycaste Restaurant and terrace at the water's edge, bars, concerts and shows, events and competitions.

**Casino**  
• Avenue de Paris 58320 Pougues-les-Eaux  
• **Tel :** +33 (0)3 86 90 17 00  
• **Mail :** info@pou@groupetranchant.com  
• **Website :** pougues.groupetranchant.com  
• **Facebook**



## CUFFY

### Canoe Race adventure

Set off in a canoe to discover the fauna and flora on 2 exceptional canoeing sites : the River Loire and the River Allier.

**Canoe Raid Adventure**  
• 1 Allée du Déversoir 18150 Le Guétin-Cuffy  
• **Tel :** +33 (0)7 71 06 90 34  
• **Mail :** canoeraidadventure@gmail.com  
• **Website :** www.canoeraidadventure.fr  
• **Facebook**



# Flavours galore



Throughout the week many markets take place in Nevers and its greater urban area. You will find cheeses, fresh vegetables and also local wines.

## Challuy

Organic Market at the carpark of the reception hall. Every 1<sup>st</sup> Wednesday of the month from 4 pm to 8 pm.

## Fourchambault

Rue Gambetta.  
Sunday mornings from 8 am to 1:30 pm.

## Garchizy

Place Maurice Thorez.  
Bi-monthly market on Saturdays from 8:30 am to 12 noon.

## Marzy

Place de l'Eglise.  
A little market on Friday afternoons.

## Pougues-Les-Eaux

Place de la Mairie.  
Thursdays from 8 am to 1 pm.

## Varennes-Vauzelles

Marché du Crot Cizeau, rue Louis Bodin.  
Wednesday mornings from 8 am to 12:30 pm.

